

Contact:

address: Brzoskwiniowa18

45-920 Opole

POLAND

tel: +48-606-914-040

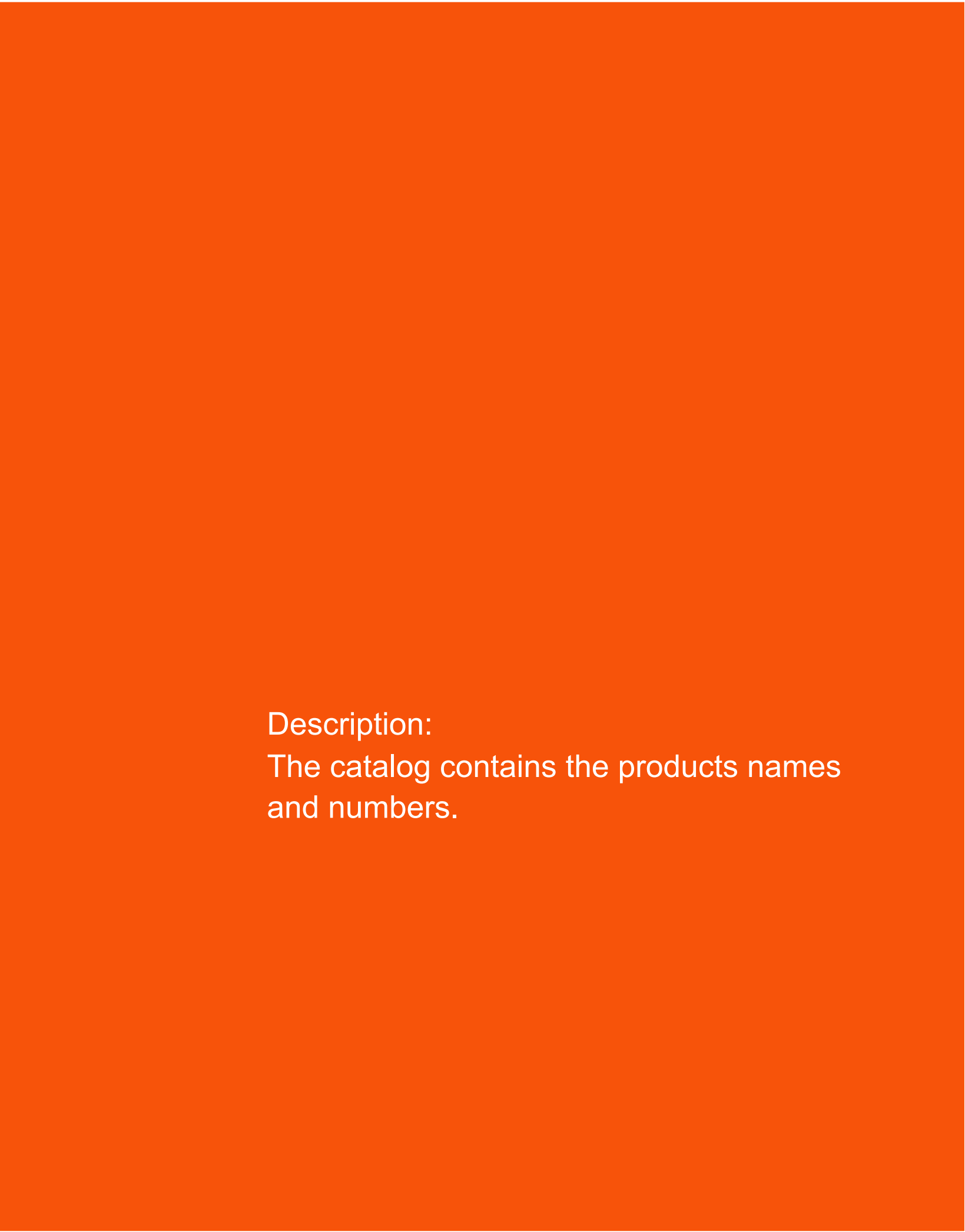
tel: +48-77-45-66-447

e-mail: info@bapro.com.pl

website: www.bapro.com.pl

CATALOG





Description:
The catalog contains the products names
and numbers.

PLASTERING MACHINE Container with frame / Gearmotors	1
applies all plastering machines series BAPRO one for 230V and 400V	
Compressor K2 400Volts	2
applies to models BAPRO one ,BAPRO one PLUS, BAPRO one MAX, BAPRO one STRONG MAX	
Water and air fittings	3
applies all plastering machines series BAPRO one for 230V and 400V	
Water pump 50M	4
applies all plastering machines series BAPRO one for 230V and 400V	
Automation 400V	5
applies all models BAPRO one ,BAPRO one PLUS, BAPRO one MAX, BAPRO one STRONG MAX	
Compressor K2 230Volts	6
applies to models BAPRO one 230V, BAPRO one 230V STRONG MAX	
Automation 230V	7
applies to models BAPRO one 230V, BAPRO one 230V STRONG MAX	
STATORS & ROTORS	8
Others spare parts and accessories	9
Mixing shaft / Cleaning / Connectors / Gaskets / Spraying gun / Hoses material ,air ,water / Electric cable / Silo system Injection hood / Special spraying gun / Adapters /	
Finishing trowel	10
applies to models BAPRO EASY II 230V	



1



2



3



4



5



6



7



8



9



10



11



12



13



14



15



Gearmotors / Plug

16



17



18



19



20



pos	product code	product name
1	.0264	Flange for gear motor
2	.0173	Mixing chamber
3	.0280/1	Gasket for mixing chamber
4	.0280/2	Gasket for frame
5	.0172	Coupling for wheel feeding the material
6	.0548	Wheel feeding the material
7	.0036	Anti dust sheet
8	.0554	Ring nur for wheel feeding the material
9	.0517	Protection grid with bag cutter
10	.0009	Protection for motor coupling
11	.0135	Buckle with locking
12	.0232	Bolt for mixing chamber
13	.0289	Cotter pin
14	.0334	Whell
15	.0484	Wheel with break
16	.0567	Gearmotor 5,5 kW special edition BAP01 416
17	.0138/1	Gearmotor 0,55 kW special edition BAP02 29
18	.0501	Gearmotor 5,5 kW special edition BAP01 236
19	.0138/2	Gearmotor 0,55 kW special edition BAP02 22
20	.0132	Plug 7x16A

1



2



3



4



5



6



7



8



9



10



11



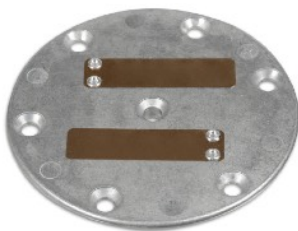
12



13



14



15



16



17



18



19



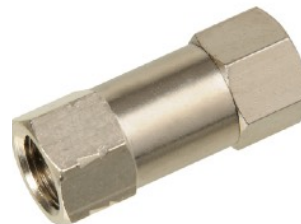
20



21



22



23



pos	product code	product name
1	.0443	Compressor HANDY K2 400 Volts
2	.0319	Plug 4x16A
3	.0195	Motor protection switch
4	.0279	Stand of motor protection switch
5	.0078	Cover oval for motor protection switch
6	.0099	Filter cover
7	.0201	Filter
8	.0490	Cover
9	.0306	Cylinder head
10	.0241	Female Coupling EWO compressor 1/4" EXT
11	.0298	Safety valve3,5 BAR
12	.0511	Handle
13	.0102	Membrane
14	.0276	Valve plate for cylinder head lower
15	.0191	Valve plate for cylinder head upper
16	.0291	Seal
17	.0189	Piston
18	.0505	Screwed joint 1/4" EXT thread brass for pressure switch
19	.0230	Threaded connector 1/4" EXT for hose 9 mm
20	.0220/1	Compressor pressure switch 400V
21	.0228	Tee air distributor for pressure switch
22	.0106	Backflow valve
23	.0229	Elbow 1/4" EXT



1



2



3



4



5



6



7



8



9



10



11



12



13



14



15



16



17



18



19



20



21



22



23



24



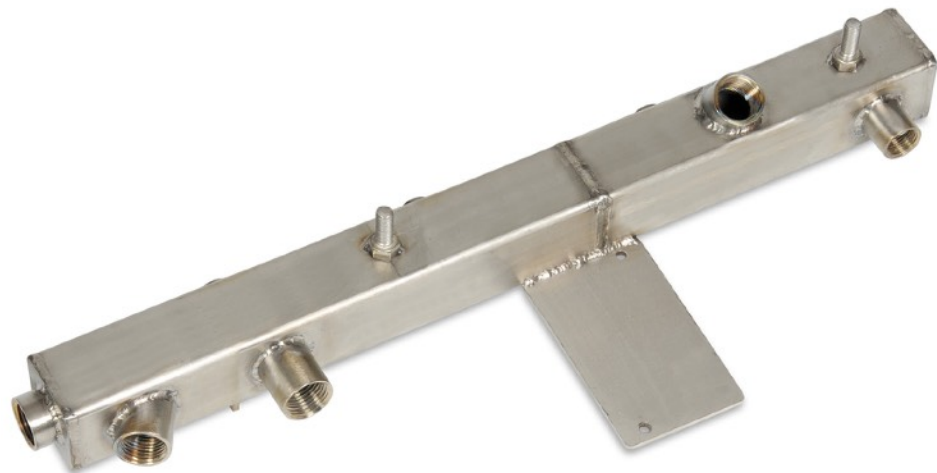
25



26



27



28



pos	product code	product name
1	.0174	Cube to pressure switch
2	.0448	Water pressure switch
3	.0122	Air pressure switch
4	.0292	Rubber protection for water gauge
5	.0076	Water pressure gauge 1/4" EXT
6	.0365	Needle regulation tap of water 1/2" INT-EXT
7	.0023	Solenoid valve 6213 42V 1/2" INT
8	.0103	Pressure reducer D06 F 1/2" INT included filter
9	.0489	Strainer chamber off brass for pressure reducer D06 F
10	.0105	Filter for pressure reducer D06 F
11	.0104	Conical sieve
12	.0351	Reduction for flow meter
13	.0057	Cone for flow meter
14	.0035	Water flow meter 150-1500 l/h
15	.0347/1	Galvanized extension 1/2" EXT 8 cm
16	.0494	Elbow 90° 3/8" INT-EXT
17	.0252	T-piece 1/2" INT
18	.0238	Elbow 90° 1/2" INT-EXT
19	.0310	Threaded connector 3/8" EXT for hose 12,5 mm
20	.0146	Drain valve for water 1/2 EXT
21	.0296	EWO plug 1/2" 35 BAR
22	.0397	Threaded connector 1/2" EXT for hose 9 mm
23	.0347/2	Extension 1/2" INT-EXT 2 cm
24	.0253	Double nipple 1/2" EXT
25	.0493	Water valve 1/2" INT-EXT
26	.0203	Connecting set with gasket 1/2" INT-EXT

27	.0392/1	Water and air module made of stainless steel
28	.0392/2	Water and air module



1



2



3



4



5



6



7



8



9



10



pos	product code	product name
1	.0094	Water pump 50M 230V without accessories
2	.0254	Plug schuco 230V
3	.0211	Elbow 1" INT-EXT
4	.0188	Geka coupling 1" EXT
5	.0212	Reduction 1" EXT for 3/4" INT
6	.0187	Geka coupling 3/4" EXT
7	.0580	Screw clamp of water hose 3/4"
8	.0019	Geka coupling 3/4" with a hose sleeve
9	.0271	Rubber water hose 20 BAR 3/4" 1,5 m
10	.0104	Conical sieve



1



2



3



4



5



6



7



8



9



10



11



12



13



14



15



16



17



18



19



20



pos	product code	product name
1	.0293	Plug socket 5x32A
2	.0467/N	Socket 230V "SCHUKO" blue
3	.0467/S	Socket 230V "SCHUKO" grey
4	.0093	Control Transformer
5	.0294	Socket compressor 4x16A
6	.0169	Socket gear motor 7x16A
7	.0269	Manual - 0 - automatic switch
8	.0198	Switch rotation
9	.0297	Motor protection switch 1,6-2,5A
10	.0277	Motor protection switch 10-16A
11	.0449	Protection switch B16
12	.0155	Main switch off
13	.0463	Button red STOP cpl.
14	.0464	Button green START cpl.
15	.0465	Button black WATER cpl.
16	.0421	Signal lamp RED cpl.
17	.0039	Contactor DIL -EM10 42V
18	.0193	Contactor auxiliary 11 DIL EM
19	.0038	Contactor main DILEM 25-10
20	.0110	Contactor auxiliary DIL M32



pos	product code	product name
1	.0410	Compressor HANDY K2 230 Volts
2	.0165	Klixen relay
3	.0195	Motor protection switch
4	.0279	Stand of motor protection switch
5	.0078	Cover oval for motor protection switch
6	.0099	Filter cover
7	.0201	Filter
8	.0490	Cover
9	.0306	Cylinder head
10	.0241	Female Coupling EWO compressor 1/4" EXT
11	.0298	Safety valve 3,5 BAR
12	.0511	Handle
13	.0102	Membrane
14	.0191	Valve plate for cylinder head lower
15	.0276	Valve plate for cylinder head upper
16	.0291	Seal
17	.0189	Piston
18	.0505	Screwed joint 1/4" EXT thread brass for pressure switch
19	.0230	Threaded connector 1/4" EXT for hose 9 mm
20	.0220/2	Compressor pressure switch 230V
21	.0228	Tee air distributor for pressure switch
22	.0106	Backflow valve
23	.0229	Elbow 1/4" EXT



1



2



3



4



5



6



7



8



9



10



11



12



13



14



15



16



17



18



19



20



21



22



23



24



25



26



27



28



pos	product code	product name
1	.0286	Plug socket 230V 3x16A
2	.0467/N	Socket 230V "SCHUKO" blue
3	.0467/S	Socket 230V "SCHUKO" grey
4	.0093	Control Transformer
5	.0169	Socket gear motor 7x16A
6	.0223	Switch water / without water
7	.0269	Manual - 0 - automatic switch
8	.0198	Switch rotation
9	.0155	Main switch off
10	.0421	Signal lamp RED cpl.
11	.0465	Button black WATER cpl.
12	.0464	Button green START cpl.
13	.0463	Button red STOP cpl.
14	.0303	Contactor 230V K1 DILM 12-10
15	.0297	Motor protection switch PKZM01-6,3A
16	.0504	Transmitter 230V PK-2P (P2,P3)
17	.0496	Transmitter 230V PK-4PZ (P4)
18	.0178	Protection switch B16 230V
19	.0312	Contactor 230V K2 ST 25
20	.0197	Universal time transmitter PCR-513 (P1,P5)
21	.0190	Inverter brake resistor only to SEW
22	.0247/S	Inverter SEW
23	.0247/N	Inverter NORD
24	.0246/1	Capacitor 40mF
25	.0246/2	Capacitor 80mF

26	.0168	Housing 4 - poles
27	.0461	Insert 4 - poles
28	.0115	Potenziometer

1



2



3



4



5



6



7



8



9



10



11



12



13



14



pos	product code	product name	
1	.0285	Stator type BAPRO SILA MAX green	12,5 l/min at 400 rpm
2	.0570	Rotor type BAPRO SILA MAX green	
3	.0556	Rotor type BAPRO SILA MAX green with pin	
4	.0552	Stator type BAPRO SILA (white)	21 l/min at 400 rpm
5	.0553	Rotor type BAPRO SILA	
6	.0140	Stator type BAPRO SILA MAX (grey)	21 l/min at 400 rpm
7	.0143	Rotor type BAPRO SILA MAX	
8	.0239	Rotor type BAPRO SILA MAX with pin	
9	.0456	Stator type BAPRO SILA MAX 230V (blue)	24 l/min at 400 rpm
10	.0120	Rotor type BAPRO SILA MAX 230V	
11	.0242	Rotor type BAPRO SILA MAX 230V with pin	
12	.0196	Stator type BAPRO SILA MAX wylewka	34 l/min at 400 rpm
13	.0219	Rotor type BAPRO SILA MAX wylewka	
14	.0206	Rotor type BAPRO SILA MAX wylewka with pin	

1



2



3



4



5



6



7



8



9



10



11



12



13



14



15



16



17



18



19



pos	product code	product name
1	.0564	Cleaning tool
2	.0563	Cleaning shaft
3	.0683	Pumpe outlet 5/4" EXT
4	.0399	Tie rods
5	.0151	Mixing shaft
6	.0013	Mixing shaft for light plaster
7	.0568	Motor coupling 25 mm
8	.0533/1	Clamp 14-17
9	.0580	Screwed clamp of water hose 3/4"
10	.0451	Screwed clamp for material hose 25 mm
11	.0452	Screwed clamp for material hose 35 mm
12	.0533/2	Clamp 20-23
13	.0024	Sponge ball 30 mm
14	.0268	Sponge ball 40 mm
15	.0033	Air pipe cleaner
16	.0367	Handle for Cleaning tool
17	.0546	Mortar pressure gauge 25 mm cpl.
18	.0318	Special mixing BAPROMIX with mortar couplings female 5/4" INT tread and two handles for hose 35 mm working pressure 50 BAR
19	.0148	Water pump 80M 230V without accessories

1



2



3



4



5



6



7



8



9



10



11



12



13



14



15



pos	product code	product name
1	.0373	Geka coupling 3/8" INT (internal thread)
2	.0022	Geka coupling 1/2" INT
3	.0021	Geka coupling 3/4" INT
4	.0248	Geka coupling 1" INT
5	.0371	Geka coupling 3/8" EXT (external thread)
6	.0186	Geka coupling 1/2" EXT
7	.0187	Geka coupling 3/4" EXT
8	.0188	Geka coupling 1" EXT
9	.0121	Plug geka coupling
10	.0018	Geka coupling 1/2" with a hose sleeve
11	.0019	Geka coupling 3/4" with a hose sleeve
12	.0372	Geka coupling 1" with a hose sleeve
13	.0068/A	Water nozzle 1/2"
14	.0068/B	Water nozzle 1/2" with geek coupling
15	.0028	Water valve 3/4" with geka couplings 3/4" INT-EXT

16



17



18



19



20



21



22



23



24



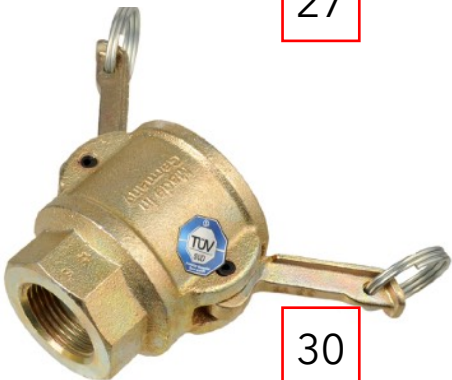
25



26



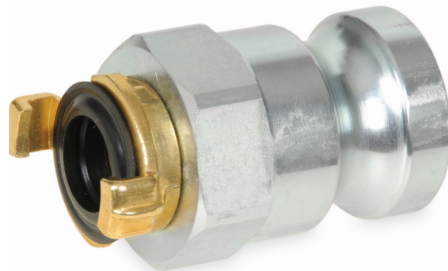
27



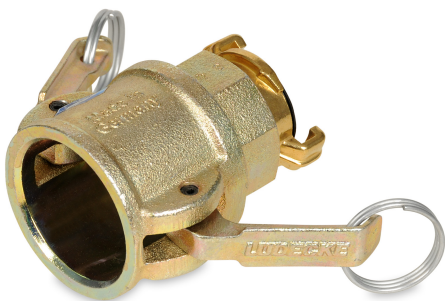
28



29



30



31



32



33



34



35



36



37



pos	product code	product name
16	.0056	Camlock 25mm Male rotary with a hose sleeve (hydraulic clamp)
17	.0111	Camlock 25mm Female with a hose sleeve (hydraulic clamp)
18	.0056/OP	Camlock 25mm Male rotary with a hose sleeve (screwed clamp)
19	.0111/OP	Camlock 25mm Female with a hose sleeve (screwed clamp)
20	.0485	Camlock 25mm Female 1" INT
21	.0386	Camlock 25mm Male 1" INT
22	.0133	Camlock 25mm Male 5/4" INT
23	.0058	Reduction of water 25 mm (Male)
24	.0040	Camlock 35mm Male with a hose sleeve (screwed clamp)
25	.0081	Camlock 35mm Female with a hose sleeve (screwed clamp)
26	.0096	Adapter coupling 35/25 mm Male
27	.0413	Camlock 35mm Female 1" INT
28	.0413	Camlock 35mm Female 5/4" INT
29	.0519	Reduction of water 35 mm (Male)
30	.0532	Reduction of water 35 mm (Female)
31	.0536	Camlock 35mm Male 1" INT
32	.0059	Bucle
33	.0060	Pin
34	.0289	Cotter pin
35	.0098	Water rubber gasket
36	.0034	Material rubber hose gasket 25 mm
37	.0097	Material rubber hose gasket 35 mm

1

2

3

4

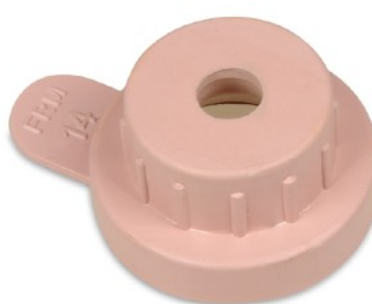
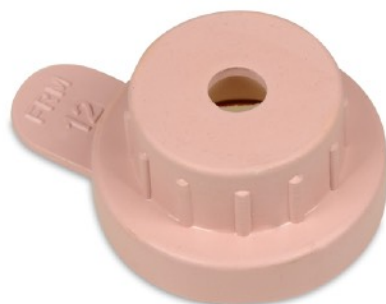
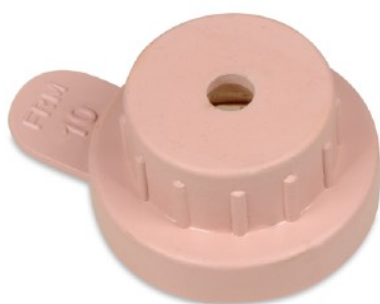


5

6

7

8



9

10

11

12



13

14

15

16



17

18

19

20



21



22



23



24



25



pos	product code	product name
1	.0311	cpl. Spray head straight included air pipe, mortar nozzle, ring-screw
2	.0150	cpl. Spray head angled included air pipe, mortar nozzle, ring-screw
3	.0341	Air pipe
4	.0430	Ring-screw
5	.0555/1P	Mortar nozzle 10 mm pink
6	.0555/2P	Mortar nozzle 12 mm pink
7	.0555/4P	Mortar nozzle 14 mm pink
8	.0202/A	Fastening armature 25mm
9	.0555/1B	Mortar nozzle 10 mm black
10	.0555/2B	Mortar nozzle 12 mm black
11	.0055/4B	Mortar nozzle 14 mm black
12	.0202/B	Fastening armature 35mm
13	.0340	Air valve tap 3/8" EXT (external thread)
14	.0487	Camlock connector 25 mm Female for air valve
15	.0522	Camlock connector 25 mm Female 1" INT rotating
16	.0485	Camlock connector 25mm Female 1" INT
17	.0059	Bucle
18	.0060	Pin
19	.0533/1	Clamp 14-17
20	.0371	Geka-coupling 3/8" EXT (external thread) with rubber gasket
21	.0014	Short spraying gun 25mm L=30 cm with camlock 25mm Female
22	.0442	Short spraying gun 25mm L=30 cm with rotating camlock 25mm Female
23	.0015	Long spraying gun 25mm L=100 cm with camlock 25mm Female
24	.0144	Long spraying gun 25mm L=100 cm rotating camlock 25mm Female
25	.0571	Spraying gun 35mm

1



2



3



4



5



6



7



8



9



10



11



12



13



pos	product code	product name
1	.0065	Material hose 25 mm 40 BAR, 10 m, cpl. with hydraulically fitted couplings male rotating and female
2	.0117	Material hose 25 mm 40 BAR, 15 m, cpl. with hydraulically fitted couplings male rotating and female
3	.0123	Material hose 25 mm 40 BAR, 20 m, cpl. with hydraulically fitted couplings male rotating and female
4	.0560	Air hose 1/2" 20 BAR included geka-coupling 11 m
5	.0561	Air hose 1/2" 20 BAR included geka-coupling 16 m
6	.0004	Air hose 1/2" 20 BAR included geka-coupling 20 m
7	.0275	Water hose 3/4" 20 BAR included geka-coupling 25 m
8	.0215	Water hose 3/4" 20 BAR included geka-coupling 50 m
9	.0483	Material hose 35 mm 40 BAR, 13,3 m, cpl. with couplings male and female
10	.0445	Material hose 35 mm 40 BAR, 20 m, cpl. with couplings male and female
11	.0526	Power cable 230V 3x4 mm ² , 25 m cpl.
12	.0233	Power cable adapter 230V/400V
13	.0245	Power cable 400V 5x4 mm ² , 25 m cpl.

1



2



3



4



5



6



7



8



9



10



1



2



3



4



5



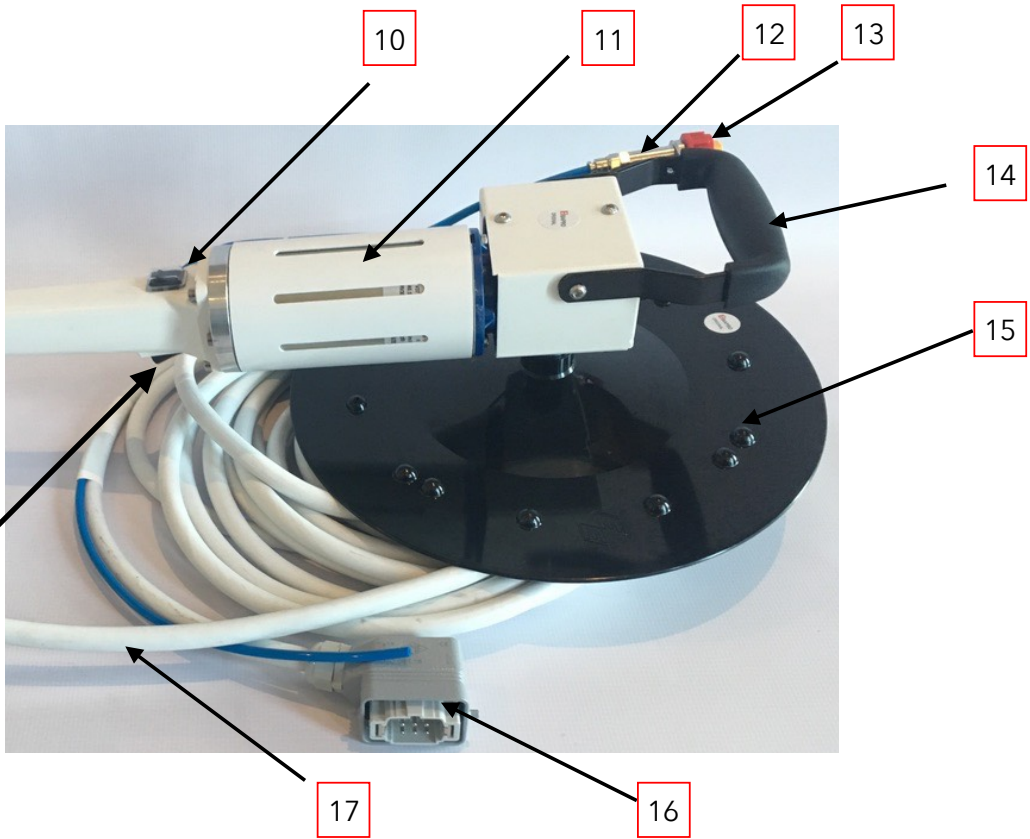
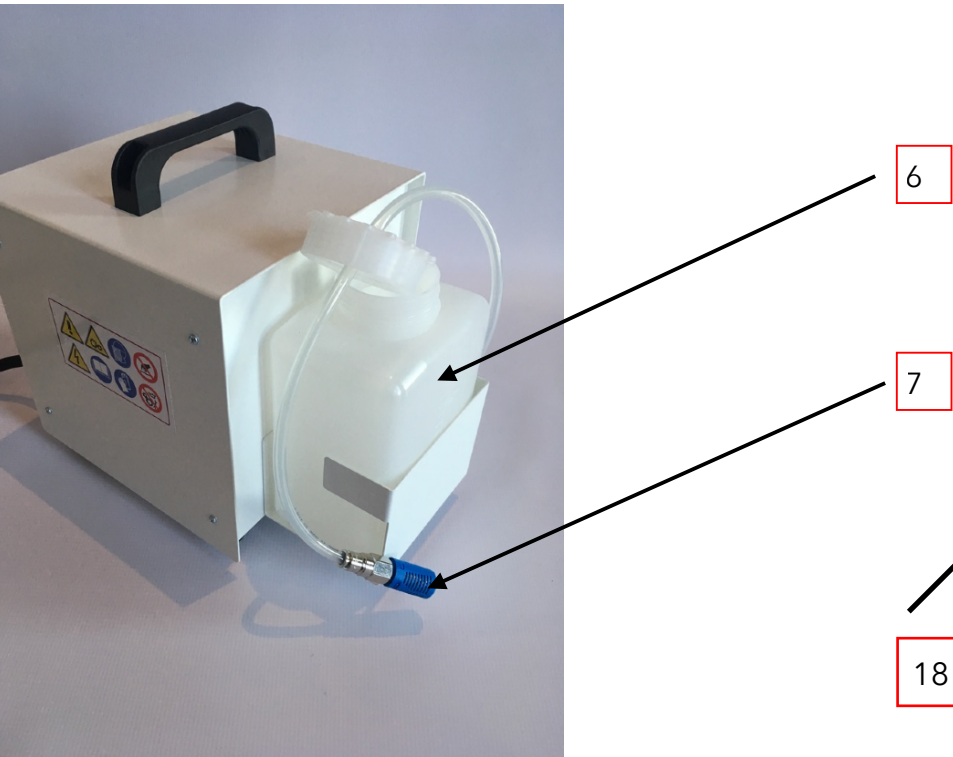
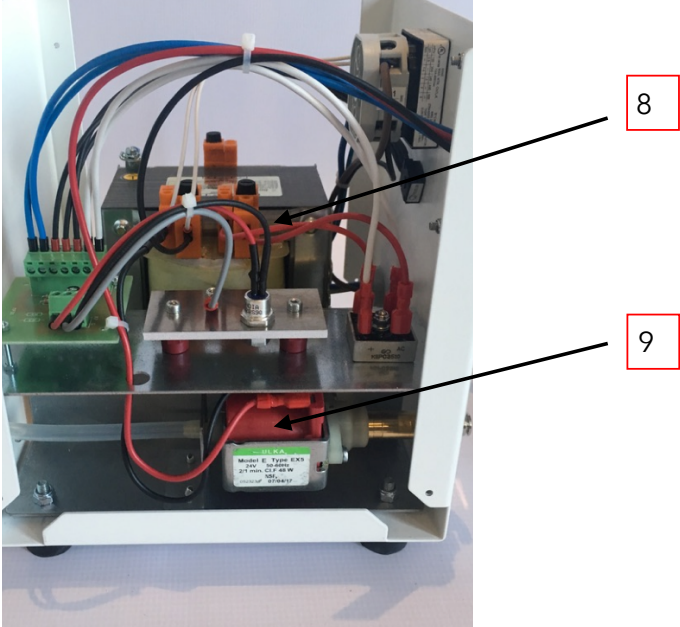
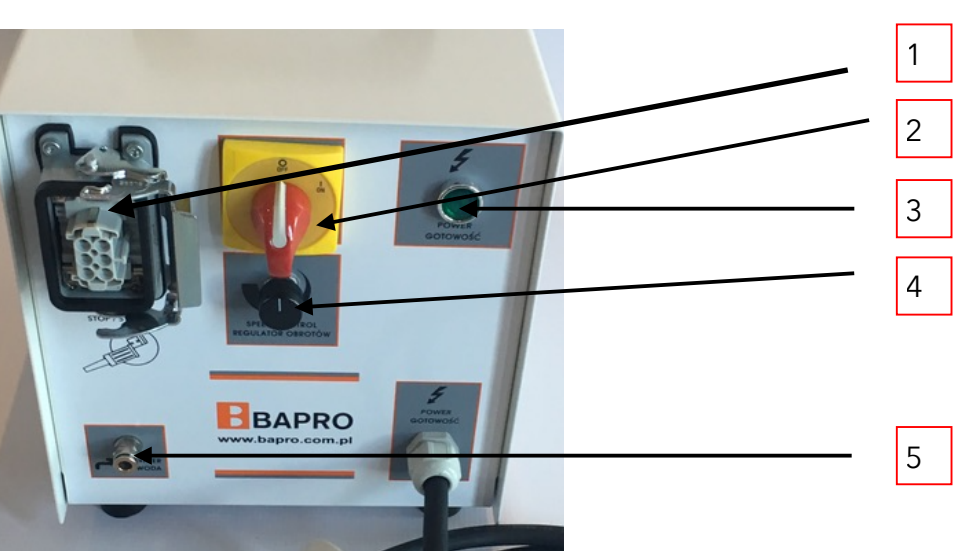
6



7



pos	product code	product name
1	.0540	Special spraying gun with controlled pressure parameter 15 meters
2	.0540/D1	Stainless steel nozzle 4 mm
3	.0540/D2	Stainless steel nozzle 6 mm
4	.0540/D3	Stainless steel nozzle 8 mm
5	.0540/D4	Stainless steel nozzle flat
6	.0095	Extension material hopper
7	.0002	Filling hopper for the conveying of material in bags



pos	product code	product name
1	.0267	Socket
2	.0381	Main switch off
3	.0327	Signal lamp READY
4	.0377	Speed control
5	.0164	Water hose junction
6	.0261	Water tank
7	.0557	Water filter
8	.0345	Control Transformer
9	.0333	Water pump
10	.0309	Water switch
11	.0051	Gearmotor
12	.0338	Backflow valve
13	.0379	Water spraying
14	.0307	Front handle
15	.0054	Drive plate with velcro
16	.0010	Plug
17	.0573	Cable 10m
18	.0055	on/off switch
19	.0127/B	White sponge with velcro 40cm
20	.0127/N	Blue sponge with velcro 40cm
21	.0127/C	Brown sponge with velcro 40cm
22	.0531	Polyurethane plate with velcro 40cm
23	.0453	PVC plate with velcro 40cm

